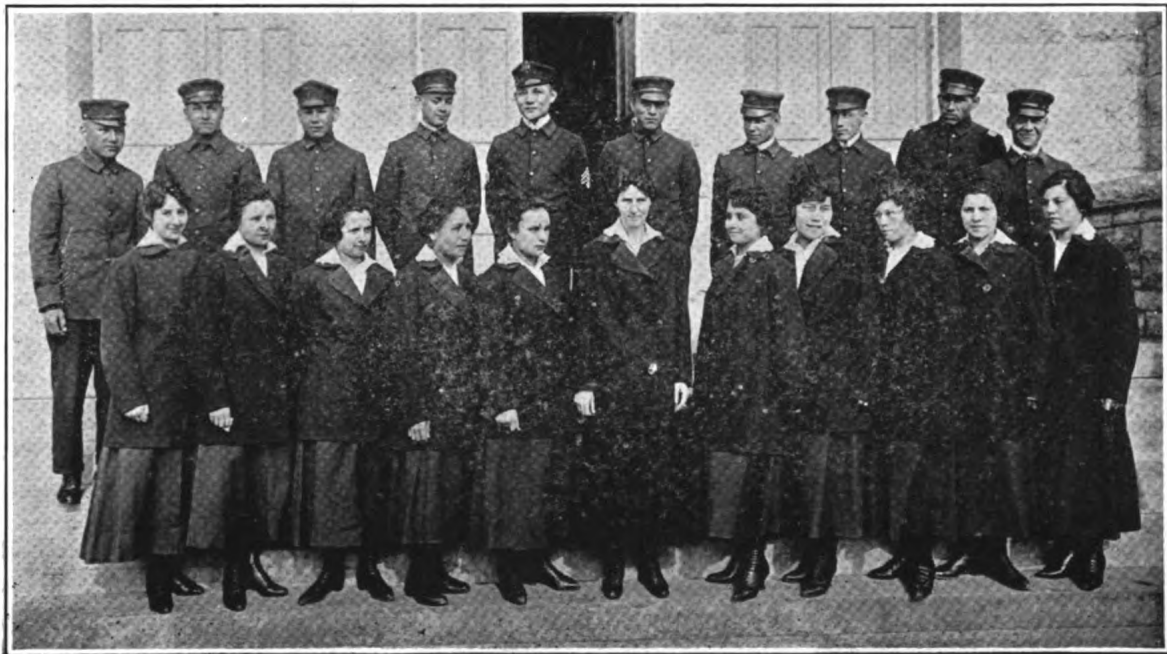
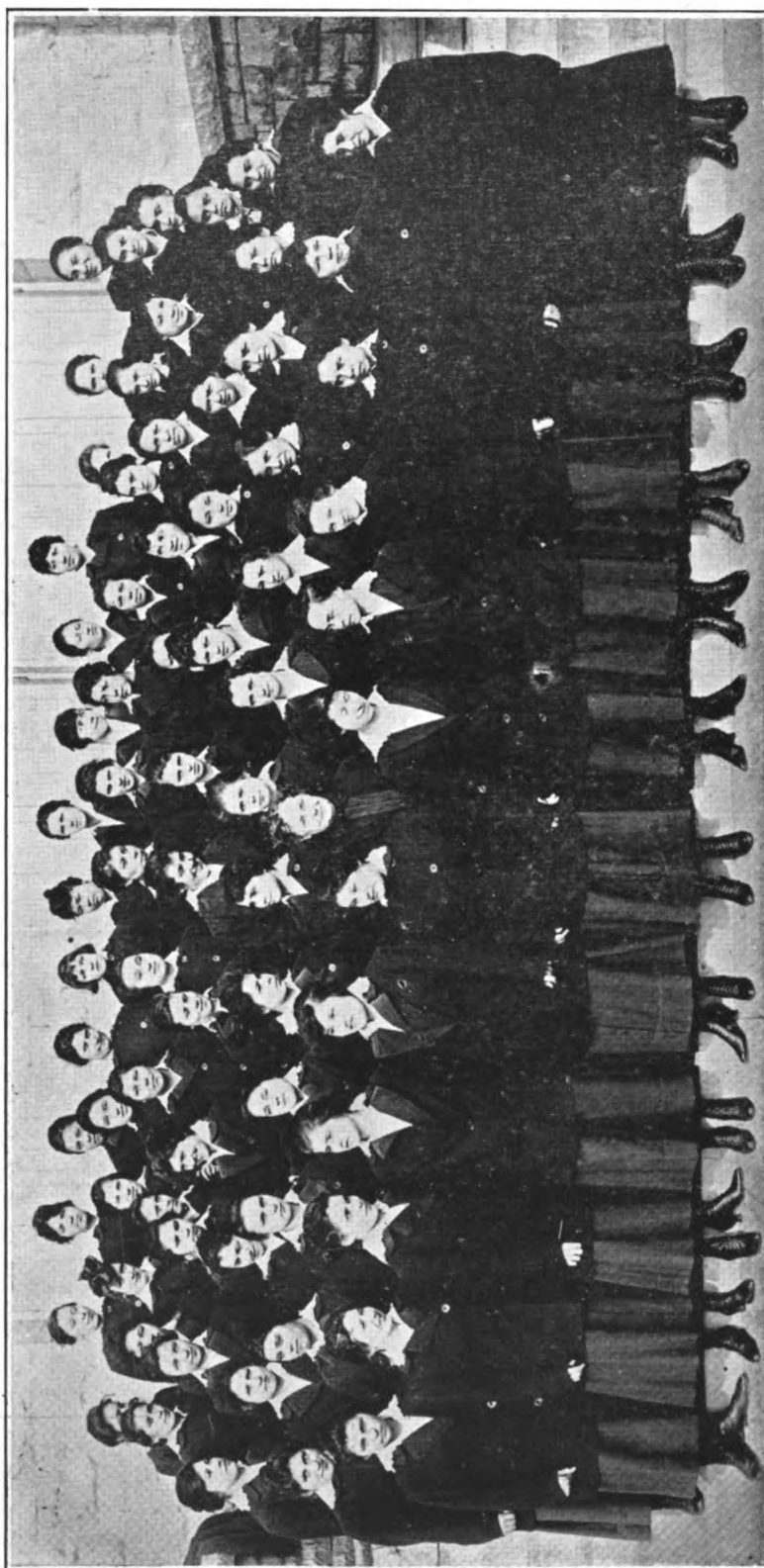




HASKELL IS "GRANDPA" AND "GRANDMA" TO THESE BOYS AND GIRLS.



THE CHOIR, 1917-18.



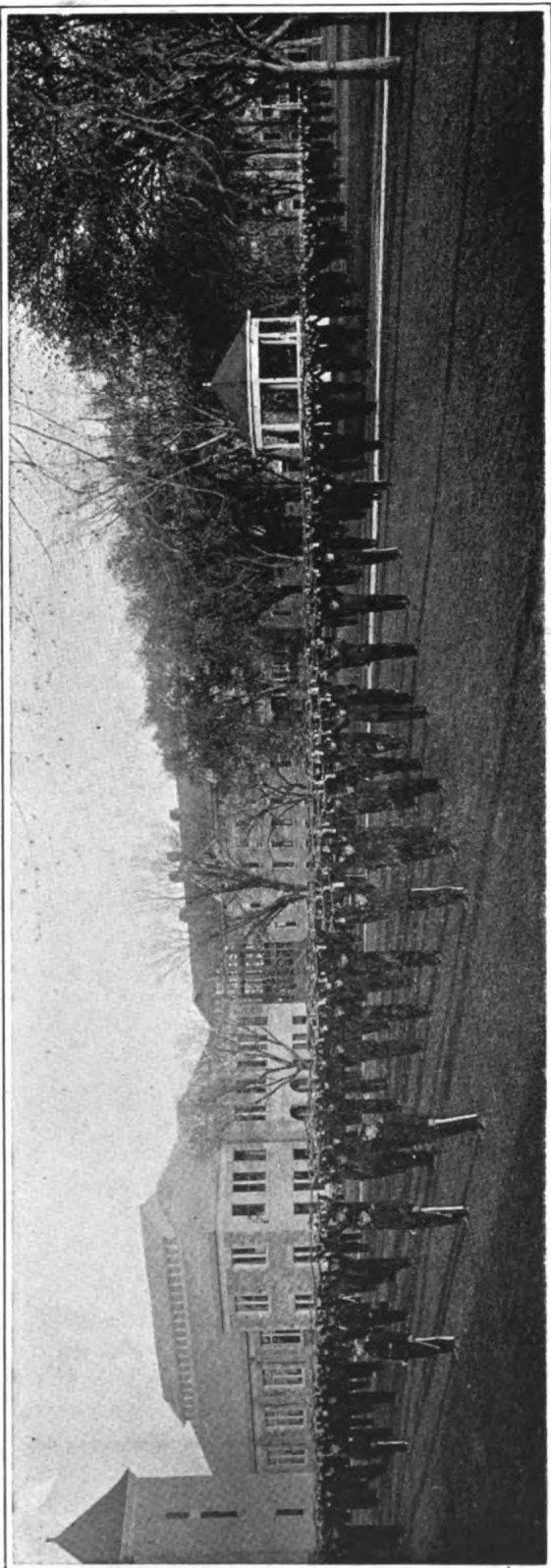
THE SARAH A. BROWNS. ONE OF OUR LITERARY SOCIETIES.



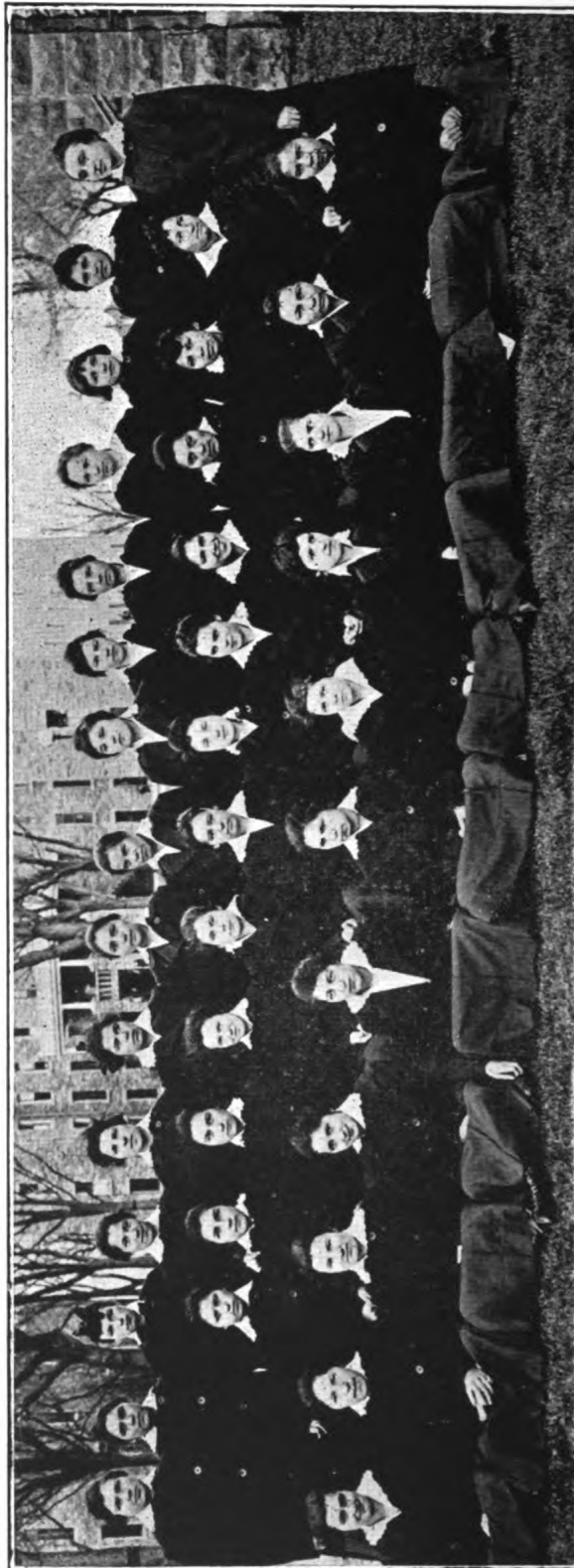
BASKET BALL, 1917-18.



TRACK, 1918.



RIFLE DRILL.



OFFICERS OF THE GIRLS' BATTALIONS.



A FREQUENT GATHERING PLACE. THE DINING ROOM.



A CHEERFUL DINING ROOM—A DOMESTIC SCIENCE CLASSROOM.



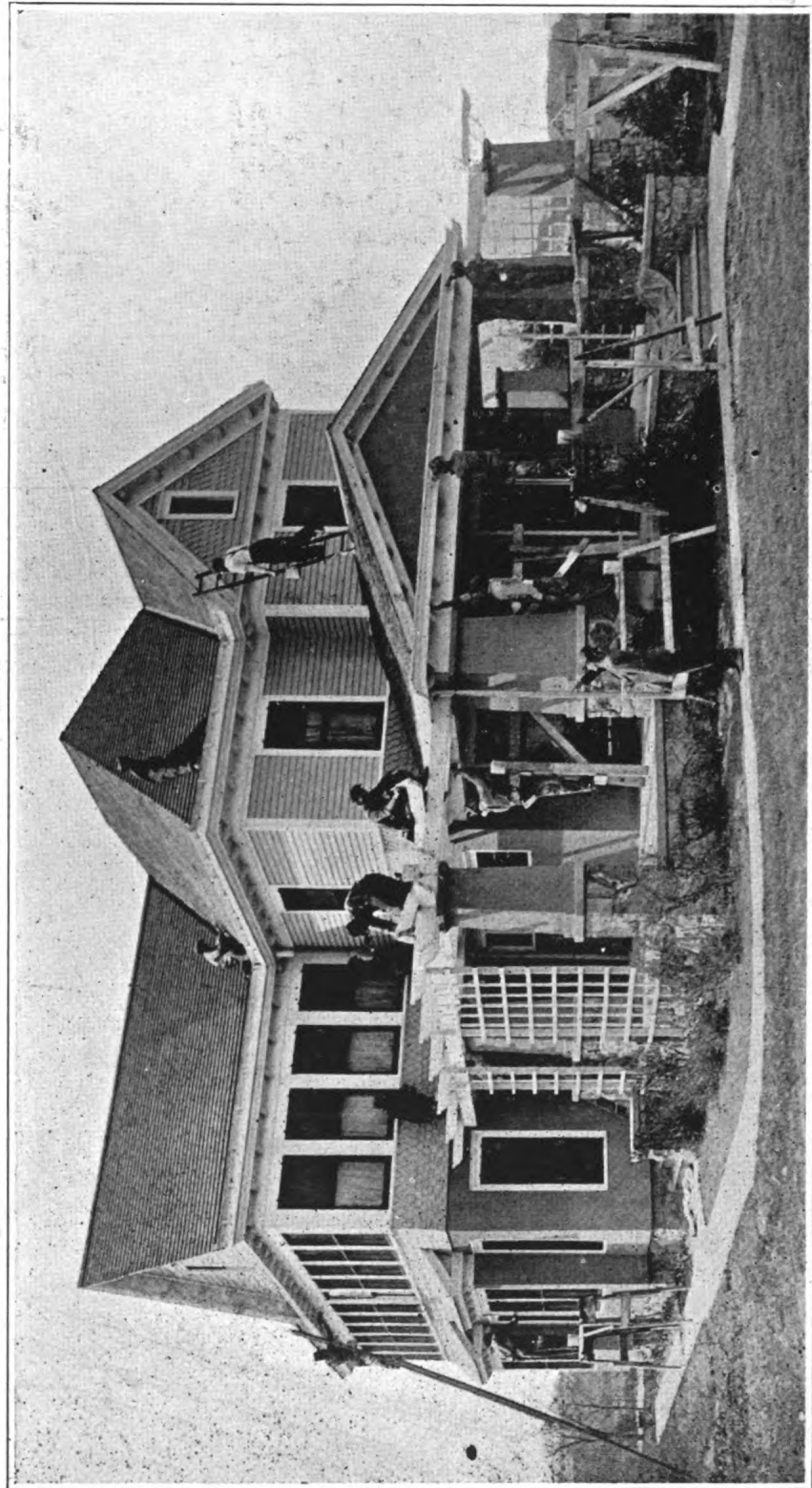
A MODERN, AIRY SLEEPING PORCH, GIRLS' HOME.



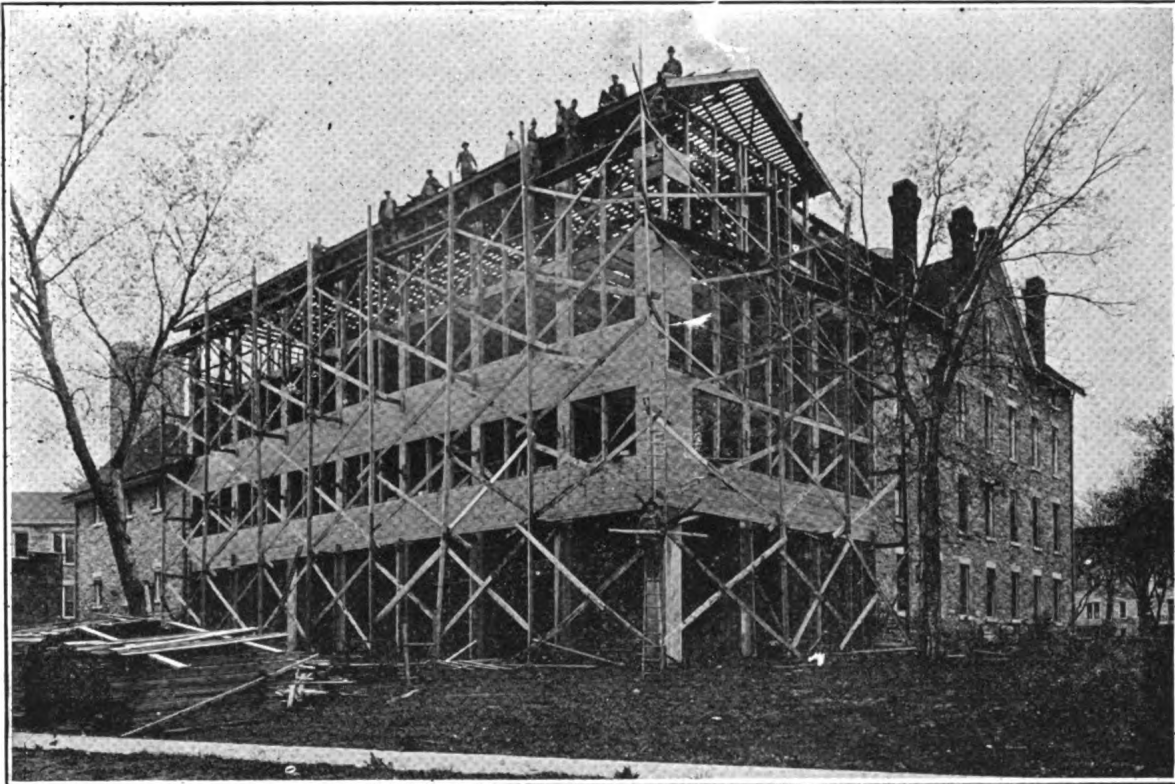
IN THE LIBRARY.



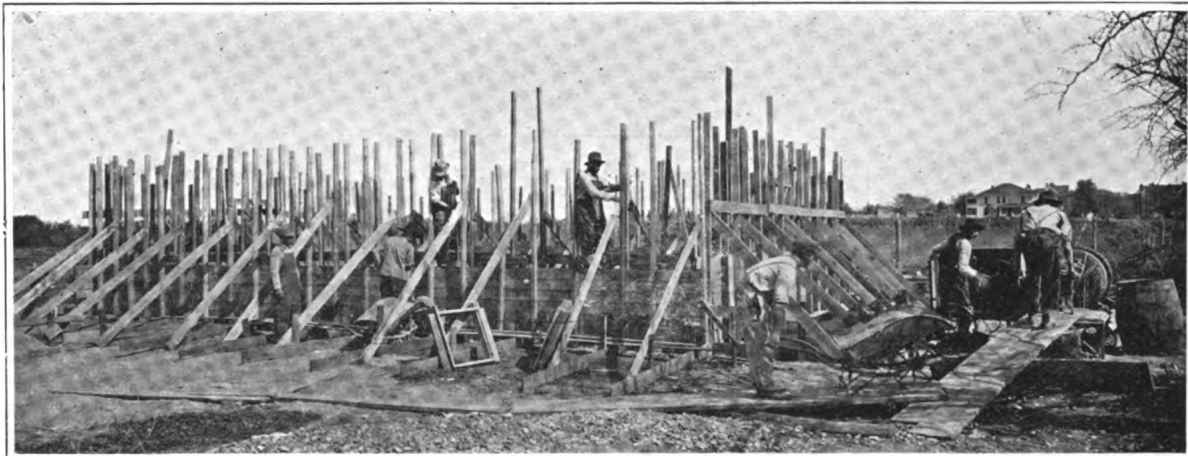
THERE IS A LARGE READING ROOM ADJOINING THE LIBRARY.



A BUSY LOT OF PAINTERS.



BUILDING A SLEEPING PORCH ON THE REAR OF LARGE BOYS' HOME. HASKELL STUDENTS ARE WORKING ON THE JOB.



MASON APPRENTICES WORKING ON A CONCRETE HOG HOUSE.



THE DOMESTIC SCIENCE COTTAGE AND A FEW OF THE GIRLS COMPOSING A CLASS FOR A TEN WEEK'S TERM.



GIRLS' PLAYGROUND, HASKELL INSTITUTE.



THE WAREHOUSE.



**ON THE EAST SIDE OF THE CAMPUS. THE HOSPITAL. THE PHYSICIAN'S RESIDENCE.
AND THE PRINCIPAL'S COTTAGE.**



COTTAGE ROW. WHERE MANY OF OUR INSTRUCTORS RESIDE.